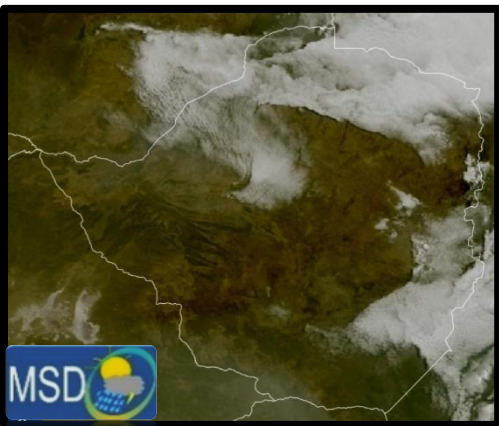




Weather Report & Forecast

SATELLITE-BASED GLANCE INTO TODAY, WEDNESDAY 08 JULY 2026



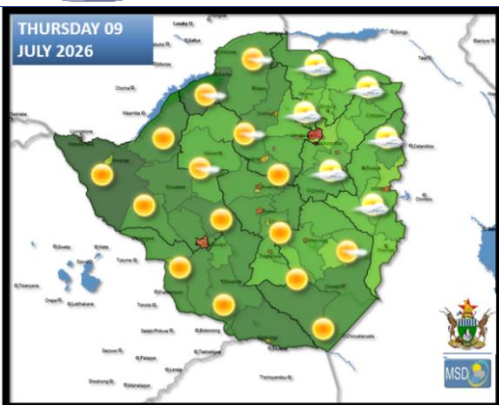
This morning, cloudy and cold conditions prevailed over the northern and eastern parts of the country. Elsewhere, it was clear and cold with severe ground frost in **Matopos (-2°C)**, moderate ground frost in **Gweru (0°C)** and slight ground frost in **Gwanda (1°C)**, **Nkayi (1°C)**, **Kezi (2°C)** and **Wedza (2°C)**. By afternoon, mild conditions were experienced in all areas with scattered clouds in the north-eastern districts of the country.



DRESS WARMLY | KEEP WARM

ESPECIALLY IN THE EARLY MORNING HOURS & OVERNIGHT. ENSURE YOUNG CHILDREN, THE ELDERLY, & PERSON'S OF AN ILL DISPOSITION ARE KEPT WARM

FORECAST FOR TOMORROW: THURSDAY 09 JULY 2026



Mashonaland Central, northern parts of Mashonaland East, Harare Metropolitan, and northern parts of Manicaland Provinces:

Mostly clear and cold at first becoming partly cloudy and mild as the day progresses. Cold conditions towards evening.

Actions to Take:

- Ensure the young and elderly are kept warm especially in the morning and overnight.

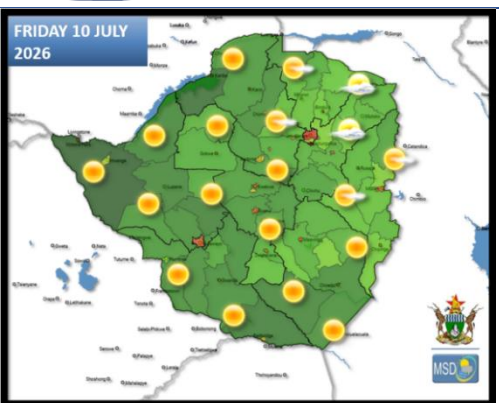
Southern parts of Mashonaland East, southern parts of Manicaland, Masvingo, Bulawayo Metropolitan, Midlands, Mashonaland West, and all Matabeleland Provinces:

Clear skies and cold conditions with moderate to severe ground frost in **Matopos, Lupane, Nkayi, Gweru and Gwanda**. Mostly sunny and mild in the afternoon becoming cold overnight.

Actions to Take:

- Implement frost prevention measures where necessary, with advice from Agritex Officer
- Monitor temperature within fowl runs and adjust accordingly, with advice from your local Agricultural Business Advisory Officer (ABAO).

WEATHER OUTLOOK FOR: FRIDAY 10 JULY 2026



ALL AREAS:

Cold under mostly clear skies in the morning with ground frost in **Matopos, Gweru, Lupane, Gwanda, Masvingo, Marondera, Henderson, and Nyanga**. Mostly sunny and mild by the afternoon and cold towards evening.

Actions to Take:

- Monitor temperature within fowl runs and adjust accordingly, with advice from your local Agricultural Business Advisory Officer (ABAO).
- Implement frost prevention measures where necessary, with advice from Agritex Officer