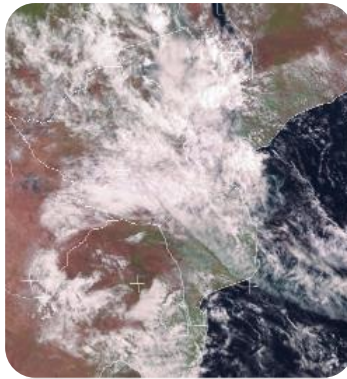


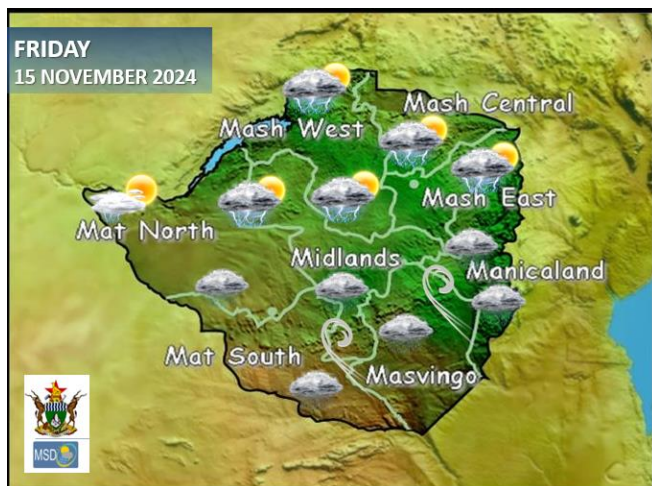


WEATHER REPORT & Forecast



Yesterday, widespread thunderstorms occurred over much of the country with localized downpours in areas along the central watershed and the eastern highlands. Places that received **above 50mm** were in **Chipinge (115mm), Chisumbanje (94mm), Nyanga (73mm), Kutsaga 72mm, Bulawayo(51mm) and Nyanyadzi(50mm)**. Other areas had rainfall below 50mm that was measured in 24 hours. In the morning, it was cloudy and mild in all areas with scattered light rains and showers. This persisted throughout the day due to the presence of moisture that is over the country.

WEATHER FOR TOMORROW: FRIDAY 15 NOVEMBER 2024



Morning: Expect partly cloudy and mild conditions in all areas with a chance of isolated light showers.

Afternoon: In all **Mashonaland** provinces, **Harare Metropolitan, Matabeleland North, the Midlands and Manicaland provinces**, anticipate partly cloudy and warm conditions with a chance of scattered thundershowers. **Masvingo and Matabeleland South provinces**, should be cloudy, windy and mild with a chance of light rain and drizzle in places.

Overnight: Partly cloudy and warm.

IMPACTS & ACTIONS TO TAKE:

- When thunder roars it is best to be indoors.
- Secure rooftops especially in schools as the rains may be accompanied by strong winds and hail in some places.

WEATHER OUTLOOK FOR: SATURDAY 16 NOVEMBER 2024



Morning: Partly cloudy, cool and windy conditions over much of the country.

Afternoon: Mostly cloudy and warm with a chance of isolated thundershowers in the northern areas. In the southern areas, it should be partly cloudy.

Overnight: Partly cloudy with mild conditions.

Impacts & Actions to Take:

- Secure rooftops especially in schools as the rains may be accompanied by strong winds and hail in some places
- When thunder roars it is best to be indoors.



5-DAY FORECAST FOR MAJOR CITIES:

FRI 15 – TUE 19 NOV 2024+

BULAWAYO

FRI	SAT	SUN	MON	TUE
25 17	26 18	27 19	28 19	31 20
0.0mm	0.4mm	1.4mm	1.6mm	1.6mm

CHINHOYI

FRI	SAT	SUN	MON	TUE
34 18	35 18	36 19	35 19	34 18
0.0mm	0.9mm	0.9mm	0.2mm	0.2mm

GWERU

FRI	SAT	SUN	MON	TUE
23 15	24 17	25 18	26 18	26 17
0.0mm	0.1mm	0.0mm	0.2mm	21.9mm

KADOMA

FRI	SAT	SUN	MON	TUE
28 16	29 17	31 18	33 19	34 20
0.0mm	0.0mm	0.0mm	0.0mm	0.0mm

LUPANE

FRI	SAT	SUN	MON	TUE
33 20	34 21	34 23	35 22	36 22
0.0mm	0.0mm	0.1mm	0.6mm	12.0mm

MASVINGO

FRI	SAT	SUN	MON	TUE
24 18	26 18	27 19	28 20	28 19
0.0mm	0.0mm	0.0mm	0.0mm	0.0mm

BINDURA

FRI	SAT	SUN	MON	TUE
28 18	29 18	30 19	32 20	33 19
0.2mm	0.0mm	0.0mm	3.1mm	1.1mm

GWANDA

FRI	SAT	SUN	MON	TUE
26 18	28 19	30 19	31 20	32 19
1.2mm	1.8mm	0.8mm	0.3mm	0.3mm

HARARE

FRI	SAT	SUN	MON	TUE
26 17	28 18	30 19	34 18	34 19
0.0mm	0.0mm	0.1mm	1.2mm	1.2mm

KWEKWE

FRI	SAT	SUN	MON	TUE
27 18	28 19	30 18	31 19	32 20
0.2mm	0.2mm	1.3mm	5.8mm	5.8mm

MARONDERA

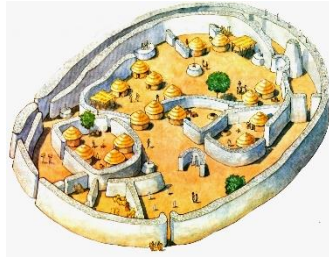
FRI	SAT	SUN	MON	TUE
23 14	25 15	26 15	27 16	28 18
0.0mm	0.0mm	0.9mm	0.9mm	1.8mm

MUTARE

FRI	SAT	SUN	MON	TUE
24 16	27 16	28 17	30 18	32 18
0.0mm	0.0mm	0.0mm	0.0mm	0.0mm



VICTORIA FALLS
ZIMBABWE



5-DAY FORECAST FOR HOLIDAY RESORTS: FRI 15 - TUE 19 NOV 2024

BINGA

FRI	SAT	SUN	MON	TUE
34 22 0.0mm	35 23 0.0mm	36 24 0.1mm	36 22 0.6mm	37 23 12.0mm

CHINHOYI CAVES

FRI	SAT	SUN	MON	TUE
34 18 0.2mm	35 18 0.0mm	36 19 0.0mm	35 19 0.0mm	3 18 0.0mm

CHIREDDI/GONAREZHOU NAT. PARK

FRI	SAT	SUN	MON	TUE
28 20 0.0mm	30 20 0.0mm	31 21 2.9mm	33 21 9.4mm	33 21 0.8mm

HWANGE NATIONAL PARK

FRI	SAT	SUN	MON	TUE
35 22 0.0mm	37 22 0.0mm	37 23 0.1mm	39 23 0.6mm	38 22 12.0mm

MATOPOS

FRI	SAT	SUN	MON	TUE
25 17 0.0mm	26 18 0.0mm	28 19 0.4mm	27 20 2.0mm	30 19 0.4mm

VICTORIA FALLS

FRI	SAT	SUN	MON	TUE
33 17 0.0mm	35 17 0.0mm	36 18 0.4mm	37 18 0.2mm	36 16 0.2mm

CHIMANIMANI

FRI	SAT	SUN	MON	TUE
26 16 0.0mm	27 16 0.0mm	28 17 0.0mm	29 17 0.0mm	28 17 0.0mm

GREAT ZIMBABWE

FRI	SAT	SUN	MON	TUE
24 18 0.0mm	26 18 0.0mm	27 19 0.3mm	28 20 2.0mm	28 18 0.7mm

HOT SPRINGS

FRI	SAT	SUN	MON	TUE
31 18 0.0mm	33 18 0.0mm	35 19 0.0mm	36 19 1.3mm	34 20 18.3mm

KARIBA

FRI	SAT	SUN	MON	TUE
34 24 0.0mm	35 24 0.0mm	36 25 0.1mm	38 24 0.6mm	37 25 12.0mm

NYANGA

FRI	SAT	SUN	MON	TUE
22 18 0.0mm	23 19 0.0mm	33 18 20.1mm	35 18 3.4mm	35 17 1.7mm

VUMBA

FRI	SAT	SUN	MON	TUE
25 16 1.8mm	26 17 0.3mm	28 18 0.0mm	30 17 4.3mm	29 17 8.5mm