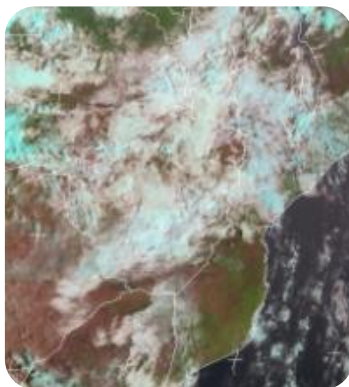


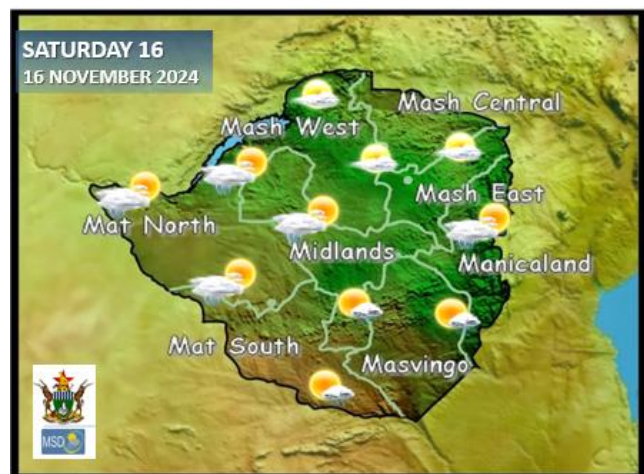


# WEATHER REPORT & Forecast



The continuous presence of moisture over the country has led to widespread light rain and drizzle in most areas, with the exception of **Matabeleland South and Mashonaland West provinces**, which experienced isolated thundershowers. The highest recorded rainfall amounts were **20mm in Chipinge, 18mm in Wedza, and 8mm in Nyanga**. This morning, it was partly cloudy and mild, with light showers in some places. These conditions continued throughout the day.

## WEATHER FOR TOMORROW: SATURDAY 16 NOVEMBER 2024



**Morning:** Briefly cloudy and mild conditions in all areas.

**Afternoon:** **Matabeleland North, the Midlands, and the northern parts of Manicaland** will experience partly cloudy and warm conditions, with a chance of isolated thundershowers. In the remaining areas, conditions are expected to be partly cloudy and warm, with a possibility of light showers.

**Overnight:** Partly cloudy and warm.

### IMPACTS & ACTIONS TO TAKE:

- When thunder roars it is best to be indoors.
- Secure rooftops especially in schools as the rains may be accompanied by strong winds and hail in some places.

## WEATHER OUTLOOK FOR: SUNDAY 17 NOVEMBER 2024



**Morning:** Clear skies and mild conditions over much of the country.

**Afternoon:** Partly cloudy and warm conditions with a chance of isolated thundershowers are expected in areas along **the Zambezi Valleys and the northern half of the country**. The remaining areas should be mostly sunny and warm.

**Overnight:** Mostly cloudless and mild in the evening.

### Impacts & Actions to Take:

- Secure rooftops especially in schools as the rains may be accompanied by strong winds and hail in some places
- When thunder roars it is best to be indoors.



## 5-DAY FORECAST FOR MAJOR CITIES:

SAT 16 – WED 20 NOV 2024

### BULAWAYO

SAT	SUN	MON	TUE	WED
23 17	26 19	29 19	30 20	28 20
0.0mm	0.4mm	1.4mm	1.6mm	1.6mm

### CHINHOYI

SAT	SUN	MON	TUE	WED
26 18	28 19	27 20	29 21	30 19
0.0mm	0.9mm	0.9mm	0.2mm	0.2mm

### GWERU

SAT	SUN	MON	TUE	WED
24 16	26 17	27 17	28 18	27 16
0.0mm	0.1mm	0.0mm	0.2mm	21.9mm

### KADOMA

SAT	SUN	MON	TUE	WED
29 17	30 18	29 18	27 20	28 17
0.0mm	0.0mm	0.0mm	0.0mm	0.0mm

### LUPANE

SAT	SUN	MON	TUE	WED
31 19	32 20	33 21	33 22	32 20
0.0mm	0.0mm	0.1mm	0.6mm	12.0mm

### MASVINGO

SAT	SUN	MON	TUE	WED
24 16	25 16	27 17	29 17	28 16
0.0mm	0.0mm	0.0mm	0.0mm	0.0mm

### BINDURA

SAT	SUN	MON	TUE	WED
27 18	28 19	29 19	30 20	31 21
0.2mm	0.0mm	0.0mm	3.1mm	1.1mm

### GWANDA

SAT	SUN	MON	TUE	WED
26 18	28 19	29 20	30 20	31 18
1.2mm	1.8mm	0.8mm	0.3mm	0.3mm

### HARARE

SAT	SUN	MON	TUE	WED
26 16	27 17	28 17	29 18	29 16
0.0mm	0.0mm	0.1mm	1.2mm	1.2mm

### KWEKWE

SAT	SUN	MON	TUE	WED
26 18	27 19	29 19	30 20	31 21
0.2mm	0.2mm	1.3mm	5.8mm	5.8mm

### MARONDERA

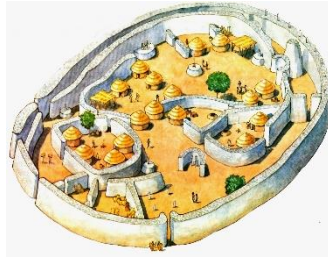
SAT	SUN	MON	TUE	WED
25 14	26 15	27 15	29 15	28 14
0.0mm	0.0mm	0.9mm	0.9mm	1.8mm

### MUTARE

SAT	SUN	MON	TUE	WED
25 14	27 15	29 16	28 16	27 14
0.0mm	0.0mm	0.0mm	0.0mm	0.0mm



VICTORIA FALLS  
7184741017



# 5-DAY FORECAST FOR HOLIDAY RESORTS:

SAT 16 - WED 20 NOV 2024

## BINGA

SAT	SUN	MON	TUE	WED
29 26 0.0mm	31 25 0.0mm	32 26 0.1mm	33 27 0.0mm	33 24 0.0mm

## CHINHOYI CAVES

SAT	SUN	MON	TUE	WED
26 18 0.2mm	28 19 0.0mm	27 20 0.0mm	29 21 0.0mm	30 19 0.0mm

## CHIREDDI/GONAREZHOU NAT. PARK

SAT	SUN	MON	TUE	WED
28 20 0.0mm	29 20 0.0mm	31 21 0.0mm	33 22 0.0mm	34 19 0.0mm

## HWANGE NATIONAL PARK

SAT	SUN	MON	TUE	WED
29 19 0.0mm	31 21 0.0mm	32 23 0.1mm	33 23 0.6mm	34 22 12.0mm

## MATOPOS

SAT	SUN	MON	TUE	WED
23 16 0.0mm	24 17 0.0mm	26 18 0.0mm	27 19 0.0mm	29 17 0.4mm

## VICTORIA FALLS

SAT	SUN	MON	TUE	WED
32 19 0.0mm	33 20 0.0mm	34 19 0.4mm	33 18 0.2mm	31 16 0.2mm

## CHIMANIMANI

SAT	SUN	MON	TUE	WED
23 15 0.0mm	25 16 0.0mm	34 17 0.0mm	29 18 0.0mm	28 16 0.0mm

## GREAT ZIMBABWE

SAT	SUN	MON	TUE	WED
24 16 0.0mm	25 16 0.0mm	27 17 0.3mm	29 17 2.0mm	28 16 0.7mm

## HOT SPRINGS

SAT	SUN	MON	TUE	WED
26 17 0.0mm	27 17 0.0mm	28 18 0.0mm	29 18 1.3mm	29 16 18.3mm

## KARIBA

SAT	SUN	MON	TUE	WED
32 26 0.0mm	33 25 0.0mm	34 26 0.1mm	33 25 0.6mm	32 24 12.0mm

## NYANGA

SAT	SUN	MON	TUE	WED
22 12 0.0mm	23 14 0.0mm	25 13 20.1mm	26 15 3.4mm	27 13 1.7mm

## VUMBA

SAT	SUN	MON	TUE	WED
24 16 1.8mm	27 17 0.3mm	28 18 0.0mm	26 18 4.3mm	27 16 8.5mm