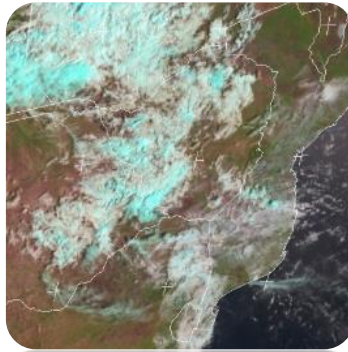




SATELLITE-BASED GLANCE INTO THIS MORNING, SUNDAY 24 NOVEMBER 2024

WEATHER REPORT & Forecast



Moisture has affected much of the country, leading to partly cloudy conditions with isolated thunderstorms in certain areas. Significant rainfall amounts were recorded, with **Gokwe and Kadoma** each receiving **13 mm**, **Kezi** receiving **12 mm**, **Chinhoyi** recording **11 mm**, and **Nyanga** receiving **8 mm**. This morning, it was partly cloudy and mild in most places, and by the afternoon, it remained partly cloudy with hot conditions. Additionally, moisture continues to spread eastward throughout the country.

WEATHER FOR TOMORROW: MONDAY 25 NOVEMBER 2024



Morning: Briefly cloudy and mild in all areas

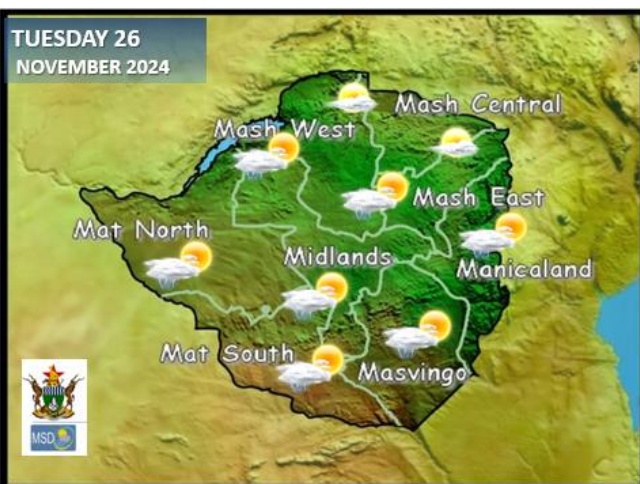
Afternoon: Partly cloudy and hot conditions with a chance of scattered thunderstorms in **all Matabeleland provinces, Bulawayo Metropolitan, Manicaland, and all Mashonaland provinces.**

Overnight: Partly cloudy and warm in most places.

IMPACTS & ACTIONS TO TAKE:

- When thunder roars it is best to be indoors.
- Secure rooftops especially in schools as the rains may be accompanied by strong winds and hail in some places.

WEATHER OUTLOOK FOR: TUESDAY 26 NOVEMBER 2024



Morning: Briefly cloudy and mild over much of the country.

Afternoon: Hot and partly cloudy conditions are expected nationwide, with a possibility of isolated thunderstorms in **Mashonaland West, northern Midlands, Matabeleland North, Bulawayo Metropolitan, Matabeleland South, Manicaland Province.**

Overnight: Partly cloudy and mild conditions.

Impacts & Actions to Take:

- When thunder roars it is best to be indoors.
- Secure rooftops especially in schools as the rains may be accompanied by strong winds and hail in some places.



5-DAY FORECAST FOR MAJOR CITIES:

MON 25– FRI 29 NOVEMBER 2024

BULAWAYO

MON	TUE	WED	THU	FRI
29 18	30 19	31 20	29 18	28 18
0.5mm	1.0mm	2.0mm	10.0mm	5.0mm

CHINHOYI

MON	TUE	WED	THU	FRI
34 20	35 20	35 21	33 21	31 18
5.0mm	2.0mm	1.0mm	0.0mm	0.0mm

GWERU

MON	TUE	WED	THU	FRI
27 18	28 18	29 19	28 18	27 17
2.0mm	2.0mm	5.0mm	10.0mm	5.0mm

KADOMA

MON	TUE	WED	THU	FRI
31 18	32 19	33 19	32 18	30 17
0.5mm	2.0mm	5.0mm	10.0mm	1.0mm

LUPANE

MON	TUE	WED	THU	FRI
31 21	32 22	33 23	31 21	33 21
0.5mm	1.0mm	2.0mm	1.0mm	1.0mm

MASVINGO

MON	TUE	WED	THU	FRI
31 20	32 21	33 21	31 19	30 18
0.3mm	0.5mm	1.0mm	0.0mm	0.0mm

BINDURA

MON	TUE	WED	THU	FRI
32 21	34 22	30 22	30 19	28 17
0.0mm	0.5mm	1.0mm	10.0mm	5.0mm

GWANDA

MON	TUE	WED	THU	FRI
33 22	34 22	35 21	32 20	31 20
0.5mm	0.5mm	1.0mm	0.0mm	0.0mm

HARARE

MON	TUE	WED	THU	FRI
30 20	31 20	33 21	31 19	29 18
0.5mm	1.0mm	10.0mm	2.0mm	1.0mm

KWEKWE

MON	TUE	WED	THU	FRI
32 18	34 18	33 19	32 18	32 16
0.5mm	5.0mm	2.0mm	0.0mm	0.0mm

MARONDERA

MON	TUE	WED	THU	FRI
25 18	26 18	27 17	27 17	26 16
0.5mm	0.5mm	2.0mm	1.0mm	0.0mm

MUTARE

MON	TUE	WED	THU	FRI
31 19	32 20	33 18	30 18	29 17
0.5mm	0.1mm	2.0mm	1.0mm	0.0mm



VICTORIA FALLS
ZIMBABWE



5-DAY FORECAST

FOR HOLIDAY RESORTS:

MON 25– FRI 29 NOVEMBER 2024

BINGA

MON	TUE	WED	THU	FRI
33 26 0.5mm	34 27 0.5mm	35 28 5.0mm	33 26 10.0mm	31 25 5.0mm

CHINHOYI CAVES

MON	TUE	WED	THU	FRI
34 20 5.0mm	35 20 2.0mm	35 21 1.0mm	35 21 0.5mm	31 18 0.0mm

CHIREZI/GONAREZHOU NAT. PARK

MON	TUE	WED	THU	FRI
32 23 2.0mm	34 24 4.0mm	34 24 0.6mm	32 23 0.5mm	32 21 0.0mm

HWANGE NATIONAL PARK

MON	TUE	WED	THU	FRI
27 22 5.0mm	28 23 5.0mm	30 24 10.0mm	29 22 4.0mm	28 21 0.5mm

MATOPOS

MON	TUE	WED	THU	FRI
27 18 0.6mm	28 19 0.8mm	29 19 1.0mm	27 18 10.0mm	26 17 2.0mm

VICTORIA FALLS

MON	TUE	WED	THU	FRI
32 21 0.5mm	33 23 1.0mm	33 23 2.0mm	31 22 2.0mm	29 21 1.0mm

CHIMANIMANI

MON	TUE	WED	THU	FRI
30 19 0.8mm	31 19 1.0mm	32 18 2.0mm	30 19 5.0mm	29 18 5.0mm

GREAT ZIMBABWE

MON	TUE	WED	THU	FRI
31 20 0.5mm	32 21 0.5mm	33 21 2.0mm	31 19 2.0mm	30 18 1.0mm

HOT SPRINGS

MON	TUE	WED	THU	FRI
33 21 0.5mm	32 22 0.6mm	33 22 0.2mm	31 21 0.1mm	30 20 0.0mm

KARIBA

MON	TUE	WED	THU	FRI
35 22 0.5mm	36 24 5.0mm	35 25 5.0mm	33 23 10.0mm	32 22 0.5mm

NYANGA

MON	TUE	WED	THU	FRI
26 15 0.2mm	26 15 1.0mm	25 16 2.0mm	2 15 0.5mm	22 14 0.0mm

VUMBA

MON	TUE	WED	THU	FRI
30 19 0.5mm	30 21 1.0mm	31 22 5.0mm	29 20 10.0mm	30 19 1.0mm